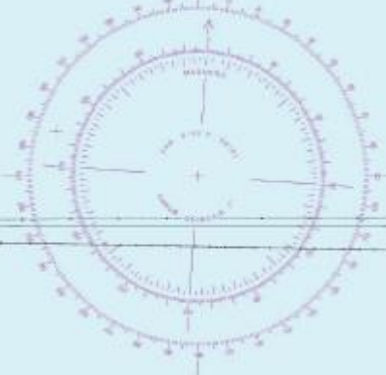


USCG Sector Corpus Christi Investigations Division



MUECES BAY

1.0	1.0	1.0	1.0	1.0	1.0	1.0	1.0	1.0	1.0
2.0	2.0	2.0	2.0	2.0	2.0	2.0	2.0	2.0	2.0
3.0	3.0	3.0	3.0	3.0	3.0	3.0	3.0	3.0	3.0
4.0	4.0	4.0	4.0	4.0	4.0	4.0	4.0	4.0	4.0
5.0	5.0	5.0	5.0	5.0	5.0	5.0	5.0	5.0	5.0
6.0	6.0	6.0	6.0	6.0	6.0	6.0	6.0	6.0	6.0
7.0	7.0	7.0	7.0	7.0	7.0	7.0	7.0	7.0	7.0
8.0	8.0	8.0	8.0	8.0	8.0	8.0	8.0	8.0	8.0
9.0	9.0	9.0	9.0	9.0	9.0	9.0	9.0	9.0	9.0
10.0	10.0	10.0	10.0	10.0	10.0	10.0	10.0	10.0	10.0



HORIZONTAL SCALE
This map is a plan view of the harbor and is not to scale. Distances are shown in feet and meters. The scale is 1 inch = 100 feet.

VERTICAL SCALE
This map is a plan view of the harbor and is not to scale. Distances are shown in feet and meters. The scale is 1 inch = 100 feet.

CAUTION
This map is a plan view of the harbor and is not to scale. Distances are shown in feet and meters. The scale is 1 inch = 100 feet.

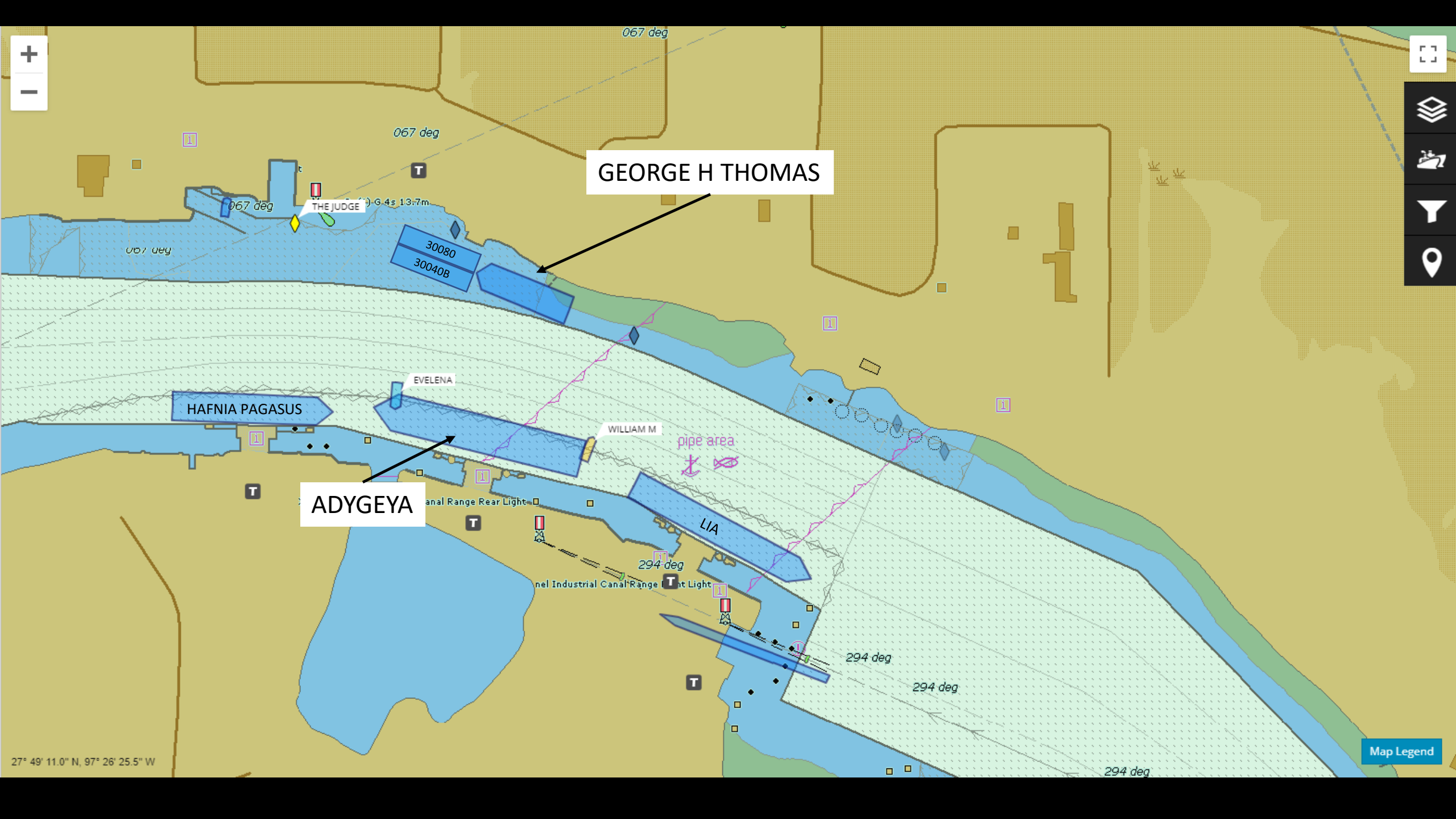


CORPUS CHRISTI HARBOR

Scale 1:50,000
SOUNDINGS IN FEET
AT MEAN LOW WATER



CORPUS CHRISTI



GEORGE H THOMAS

ADYGEYA

HAFNIA PAGASUS

THE JUDGE

30080
30040B

EVELENA

WILLIAM M

LIA

pipe area

067 deg

067 deg

067 deg

067 deg

294 deg

294 deg

294 deg

294 deg

294 deg

27° 49' 11.0" N, 97° 26' 25.5" W

Map Legend



ENTERPRISE

GEORGE H THOMAS

ADYGEYA

HAFNIA PAGASUS

EVELENA

WILLIAM M

LIA

THE JUDGE

G. 4s 13.7m

30080

30040B

27711

27784

pipe area

Canal Range Rear Light

Industrial Canal Range Light

294 deg

294 deg

294 deg

067 deg

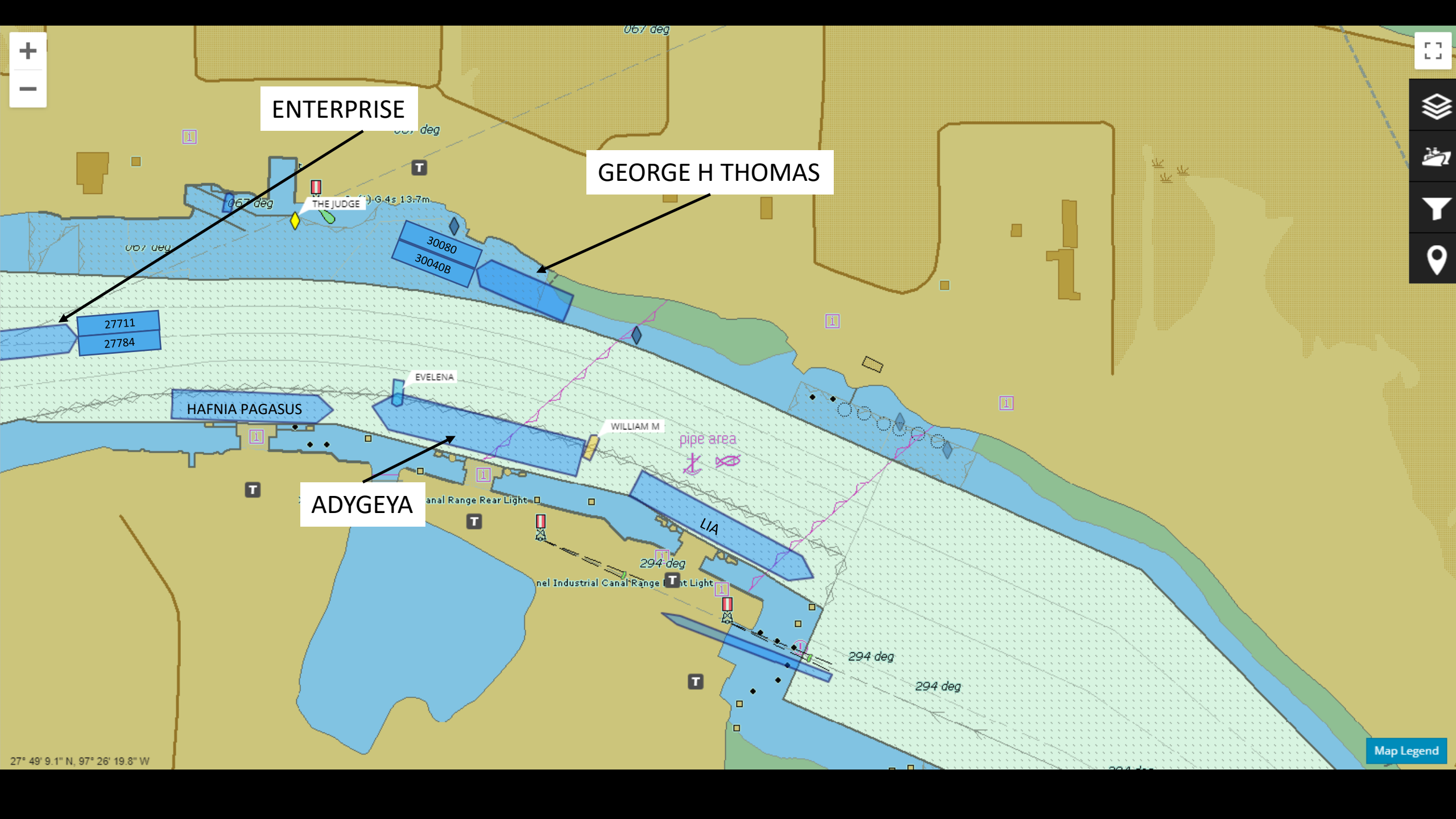
067 deg

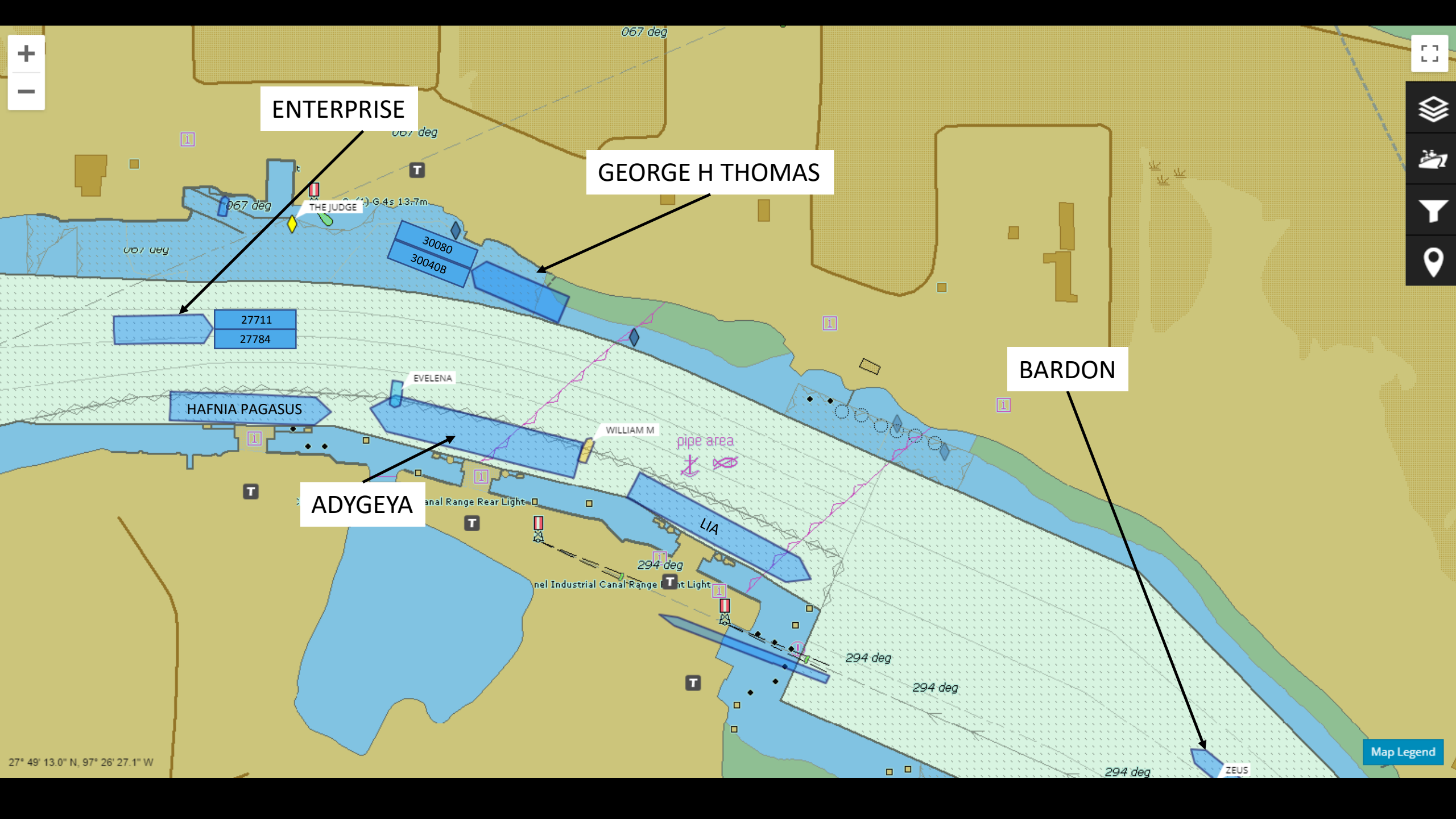
067 deg

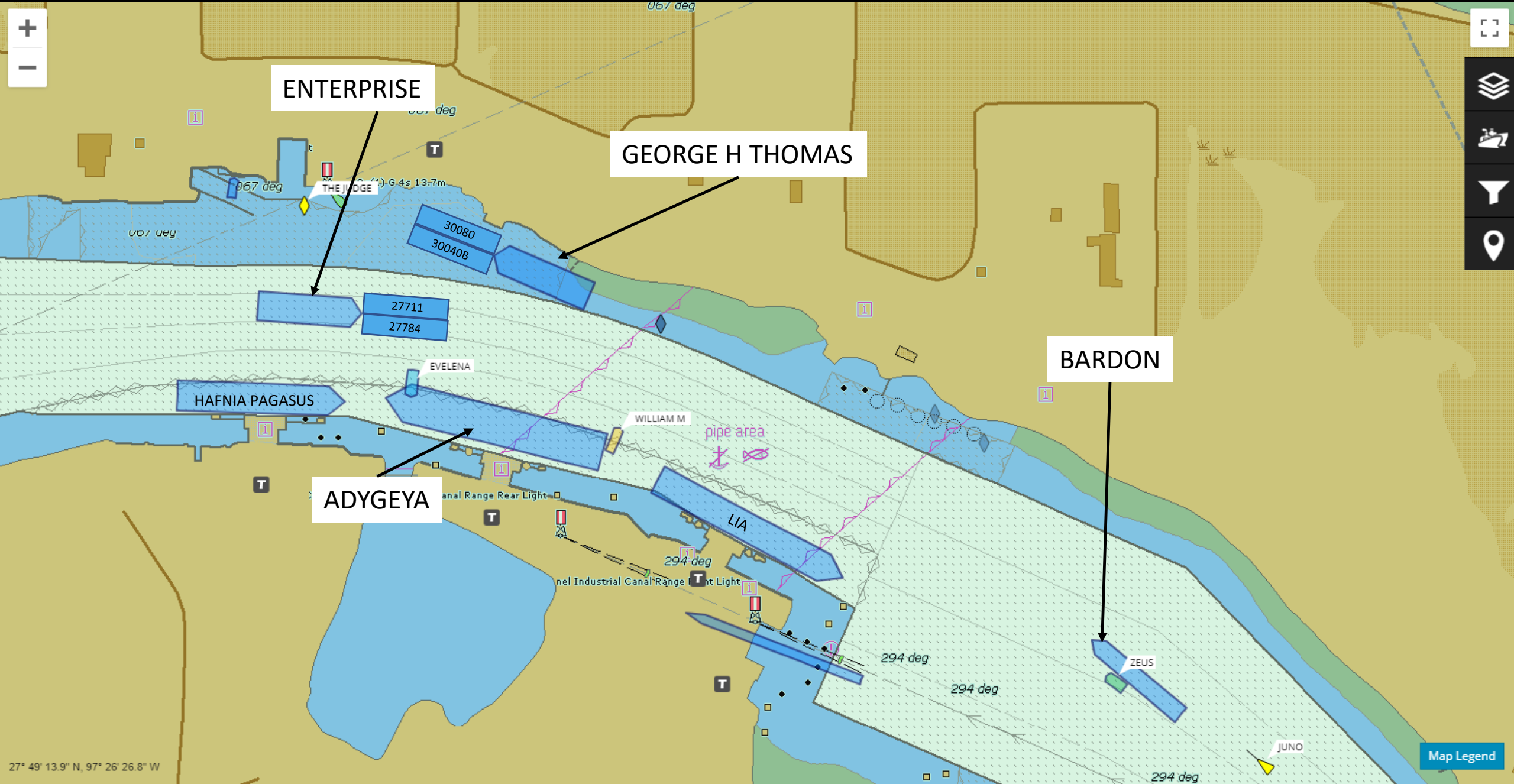
067 deg

27° 49' 9.1" N, 97° 26' 19.8" W

Map Legend







ENTERPRISE

GEORGE H THOMAS

BARDON

ADYGEYA

HAFNIA PAGASUS

EVELENA

WILLIAM M

LIA

ZEUS

JUNO

THE JUDGE

6.4s 13.7m

27711
27784

30080
30040B

294 deg

294 deg

294 deg

294 deg

067 deg

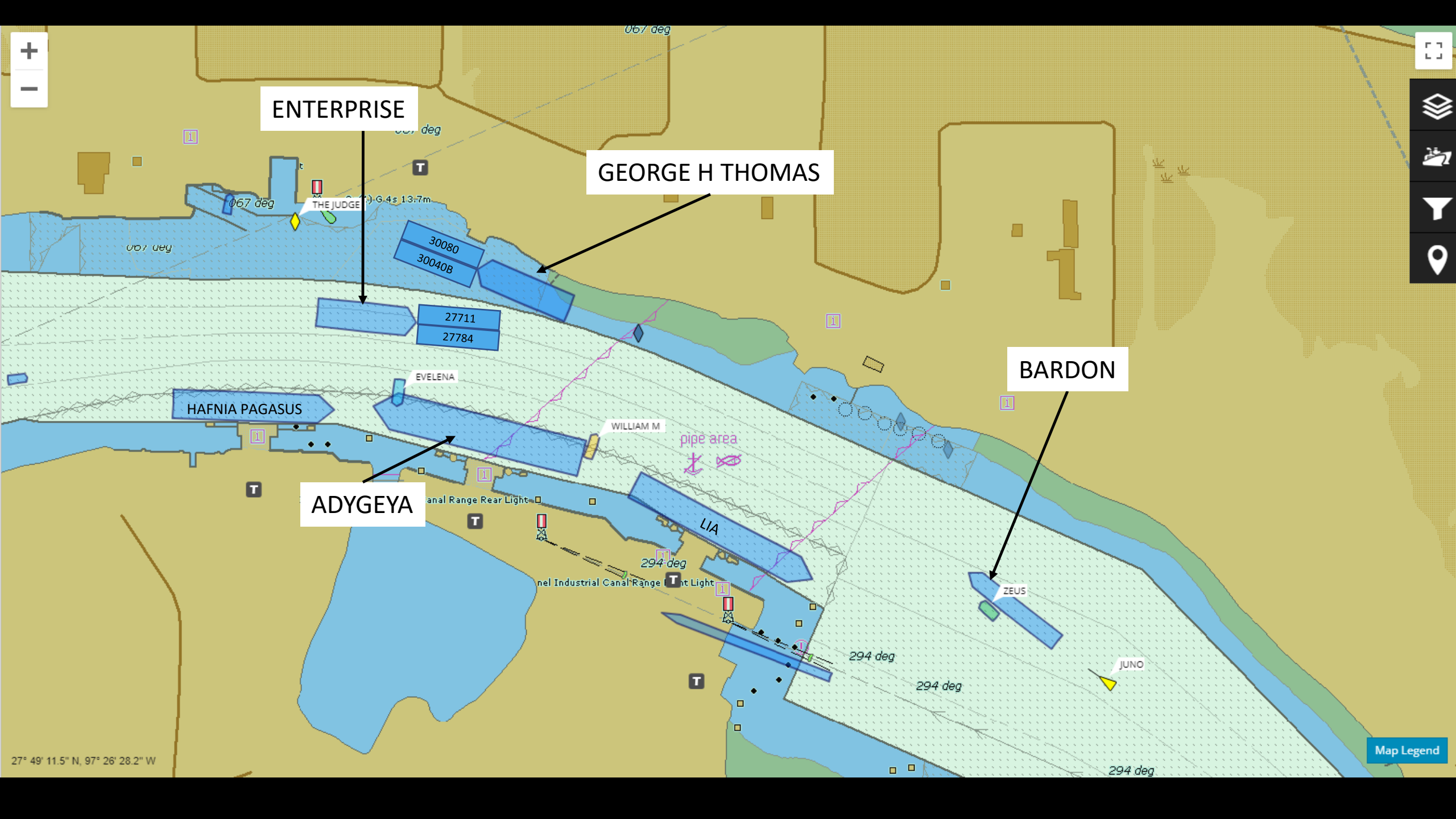
067 deg

067 deg

27° 49' 13.9" N, 97° 26' 26.8" W

Map Legend





ENTERPRISE

GEORGE H THOMAS

BARDON

ADYGEYA

HAFNIA PAGASUS

THE JUDGE

30080
30040B

27711
27784

EVELENA

WILLIAM M

LIA

ZEUS

JUNO

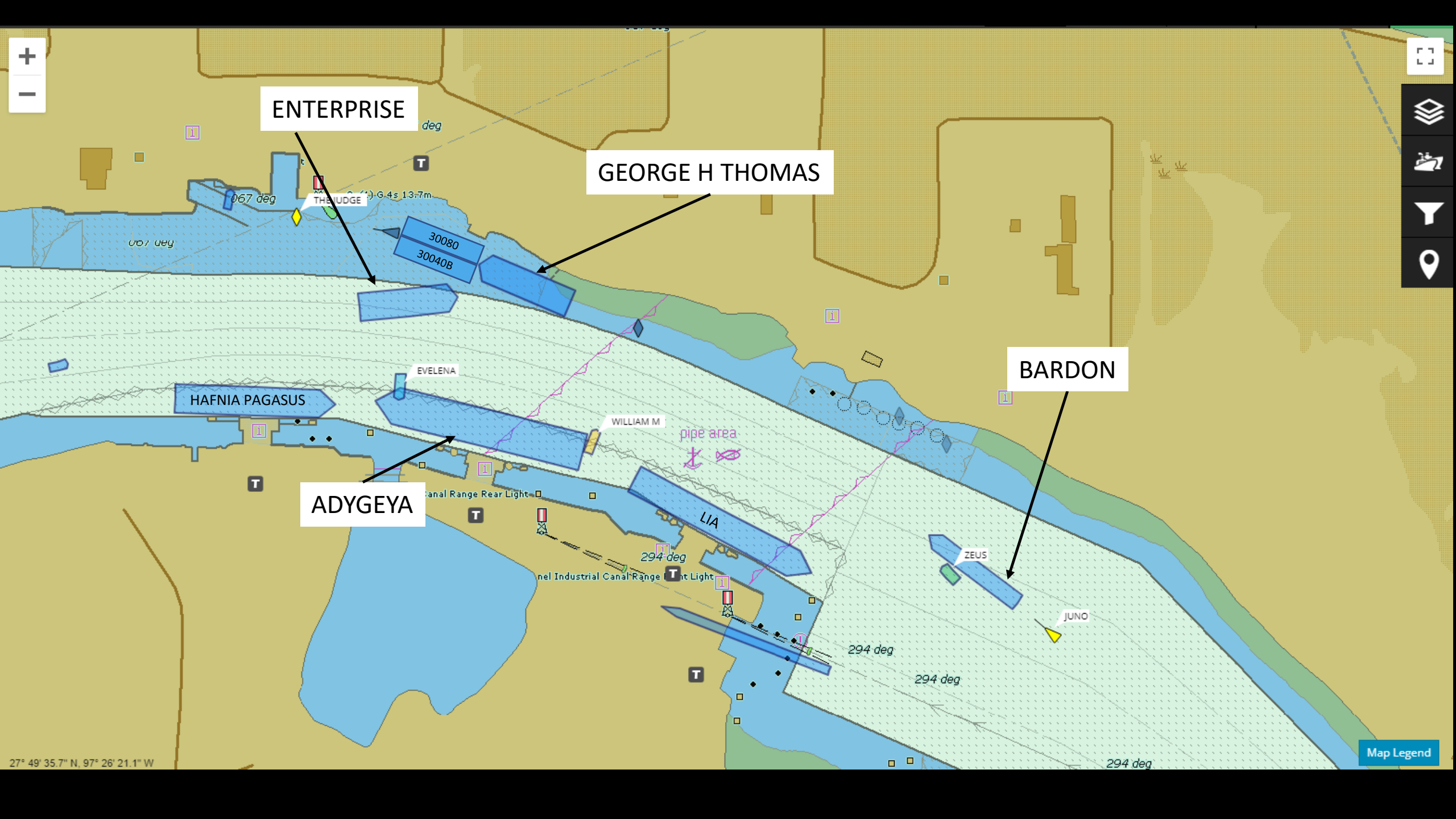
pipe area

Canal Range Rear Light

Canal Industrial Canal Range Light

Map Legend

27° 49' 11.5" N, 97° 26' 28.2" W



ENTERPRISE

GEORGE H THOMAS

BARDON

ADYGEYA

HAFNIA PAGASUS

LIA

ZEUS

JUNO

EVELENA

WILLIAM M

pipe area

THE JUDGE

30080

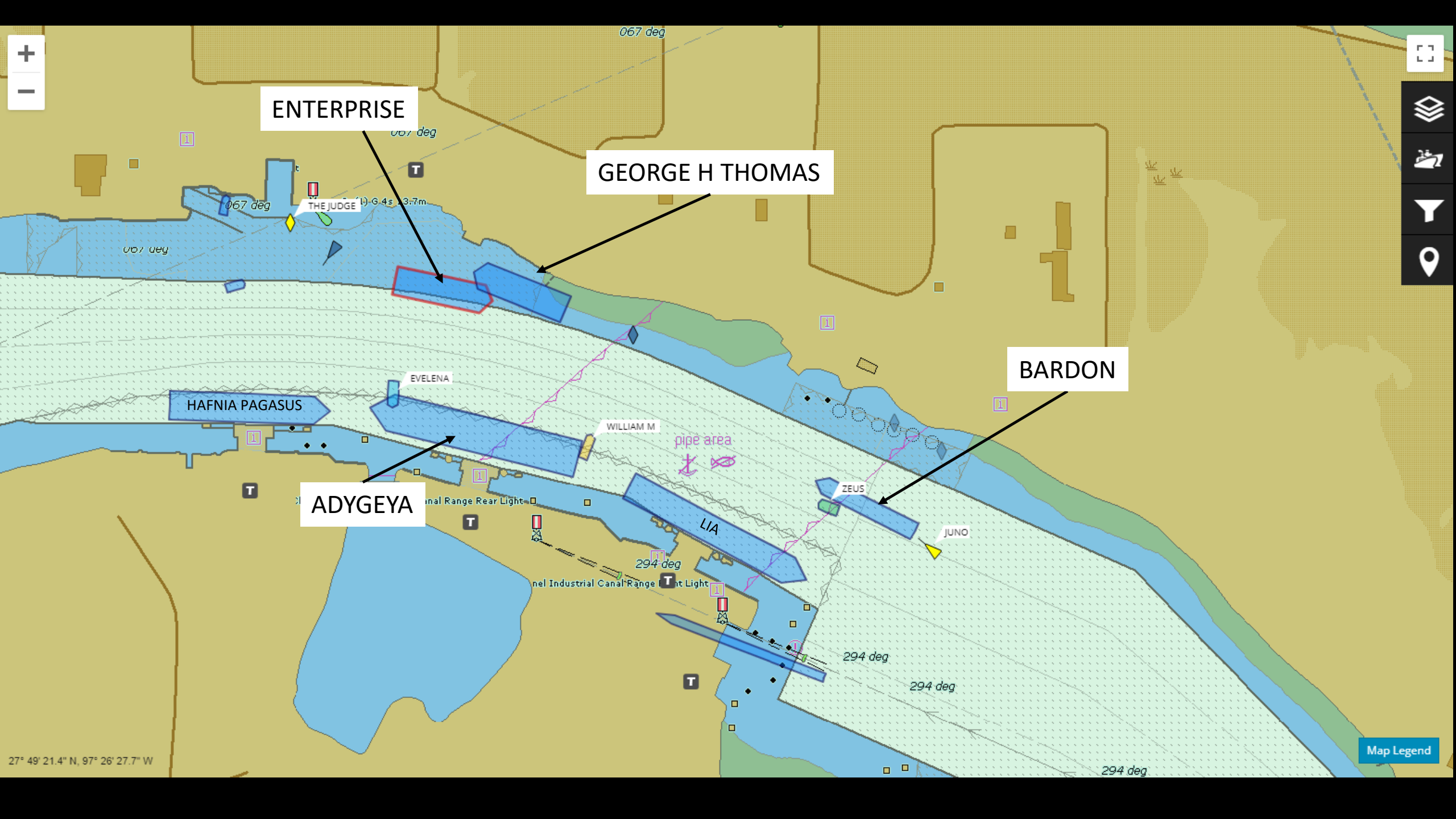
30040B

Canal Range Rear Light

Canal Industrial Canal Range Light

Map Legend

27° 49' 35.7" N, 97° 26' 21.1" W



ENTERPRISE

GEORGE H THOMAS

BARDON

ADYGEYA

HAFNIA PAGASUS

EVELENA

WILLIAM M

LIA

ZEUS

JUNO

067 deg

067 deg

THE JUDGE 1) G. 4 s 3.7m

294 deg

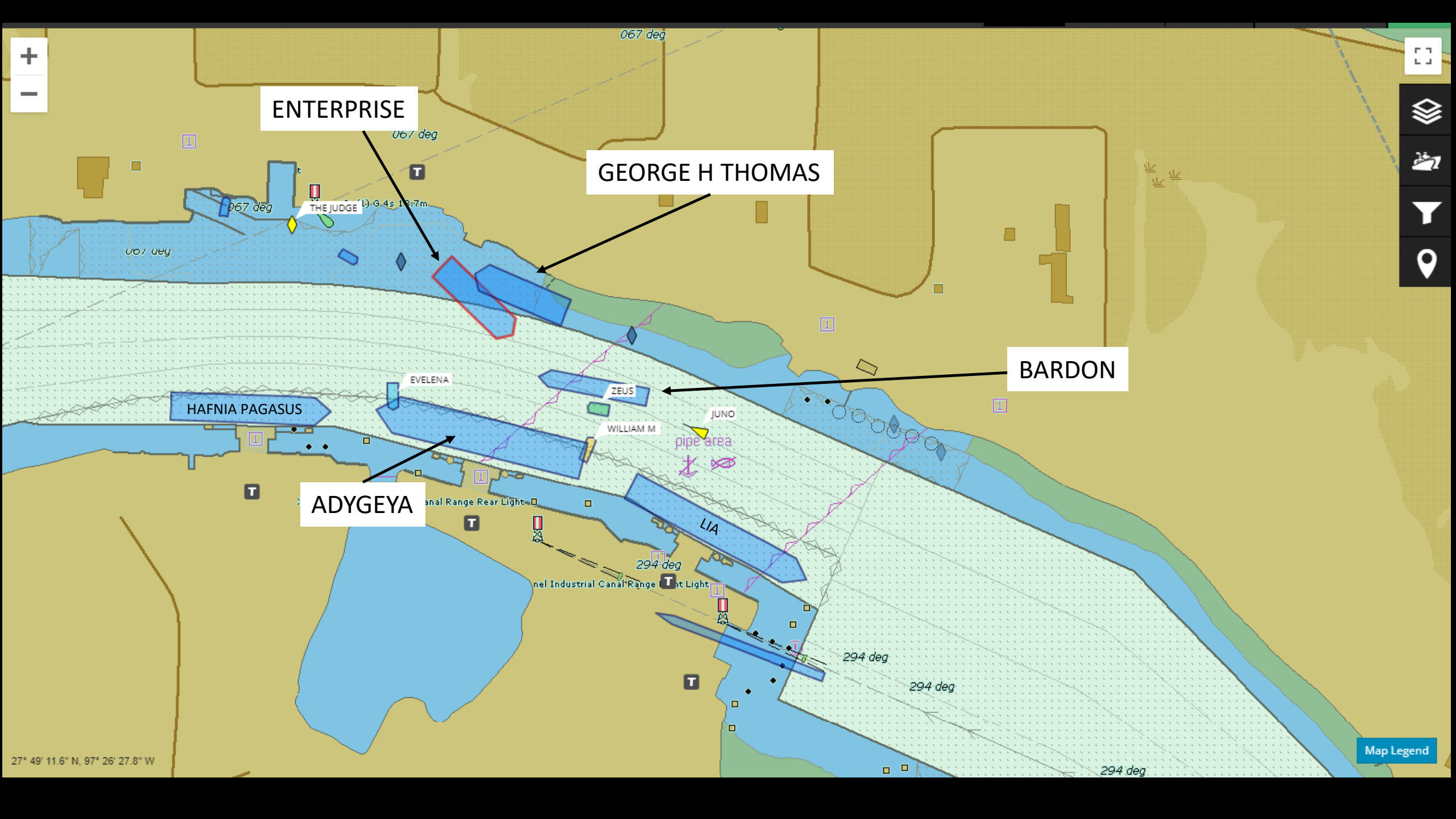
294 deg

294 deg

294 deg

27° 49' 21.4" N, 97° 26' 27.7" W

Map Legend



ENTERPRISE

GEORGE H THOMAS

BARDON

ADYGEYA

HAFNIA PAGASUS

EVELENA

ZEUS

WILLIAM M

LIA

THE JUDGE 13-7m

JUNO

pipe area

067 deg

067 deg

067 deg

067 deg

294 deg

294 deg

294 deg

294 deg

294 deg

27° 49' 11.6" N, 97° 26' 27.8" W

Map Legend





ENTERPRISE

GEORGE H THOMAS

BARDON

ADYGEYA

HAFNIA PAGASUS

EVELENA

ZEUS

WILLIAM M

JUNO

LIA

294 deg

294 deg

294 deg

294 deg

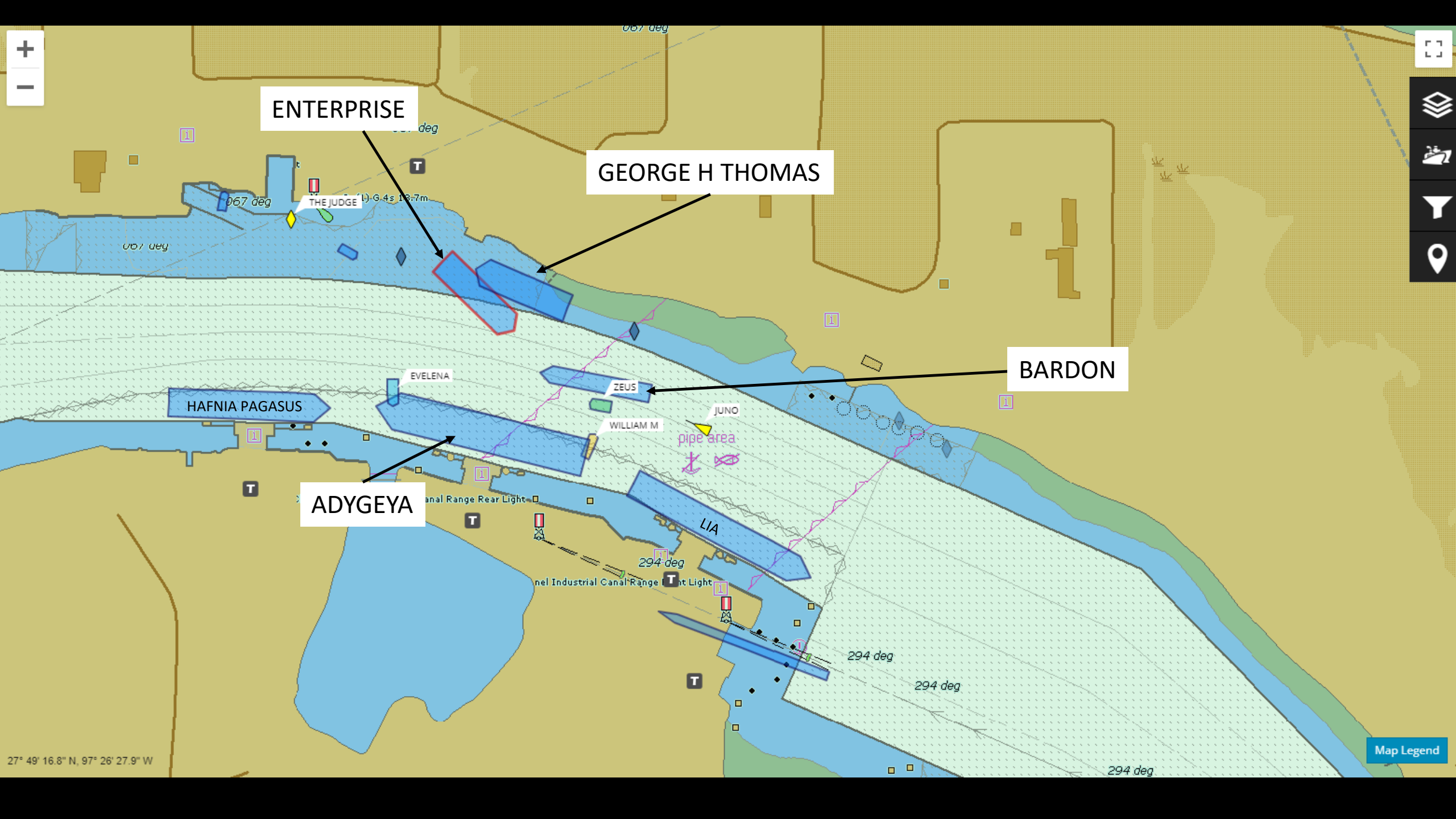
294 deg

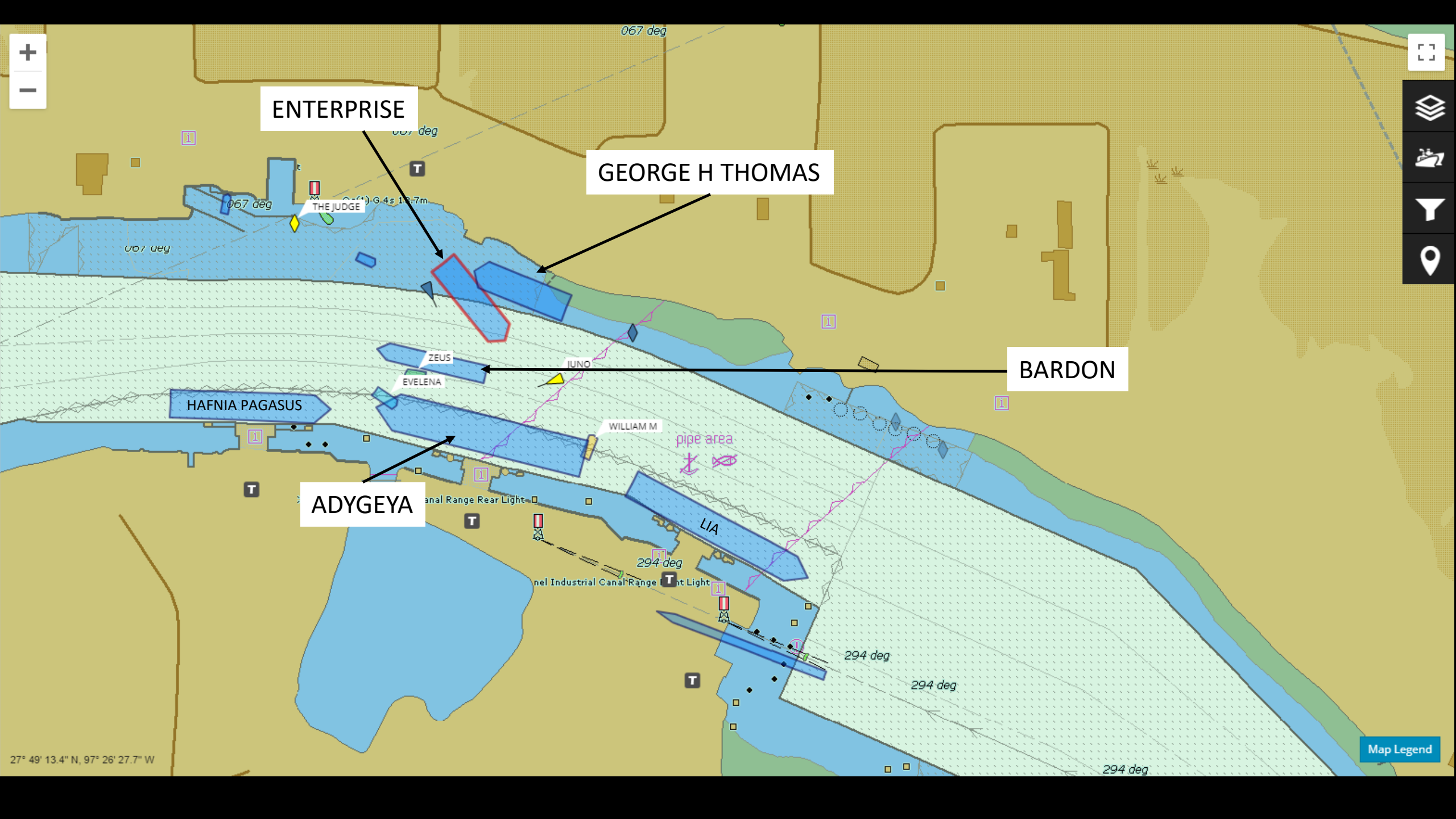
THE JUDGE 1) G. 4s 13.7m

pipe area

27° 49' 16.8" N, 97° 26' 27.9" W

Map Legend





ENTERPRISE

GEORGE H THOMAS

BARDON

ADYGEYA

HAFNIA PAGASUS

ZEUS

EVELENA

WILLIAM M

LIA

Canal Range Rear Light

Canal Industrial Canal Range Light

pipe area

THE JUDGE

JUNO



Map Legend

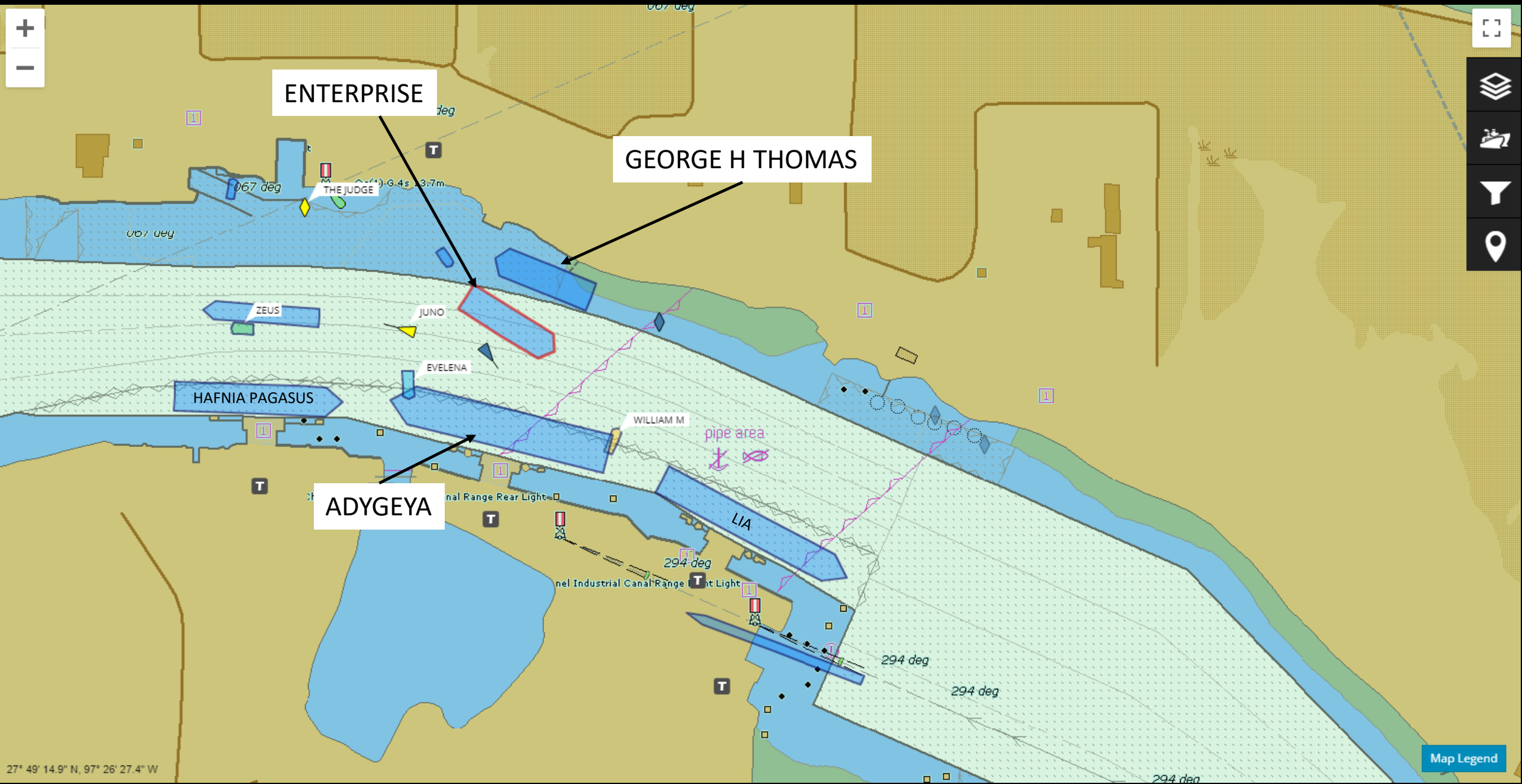
27° 49' 13.4" N, 97° 26' 27.7" W



ENTERPRISE

GEORGE H THOMAS

ADYGEYA



27° 49' 14.9" N, 97° 26' 27.4" W

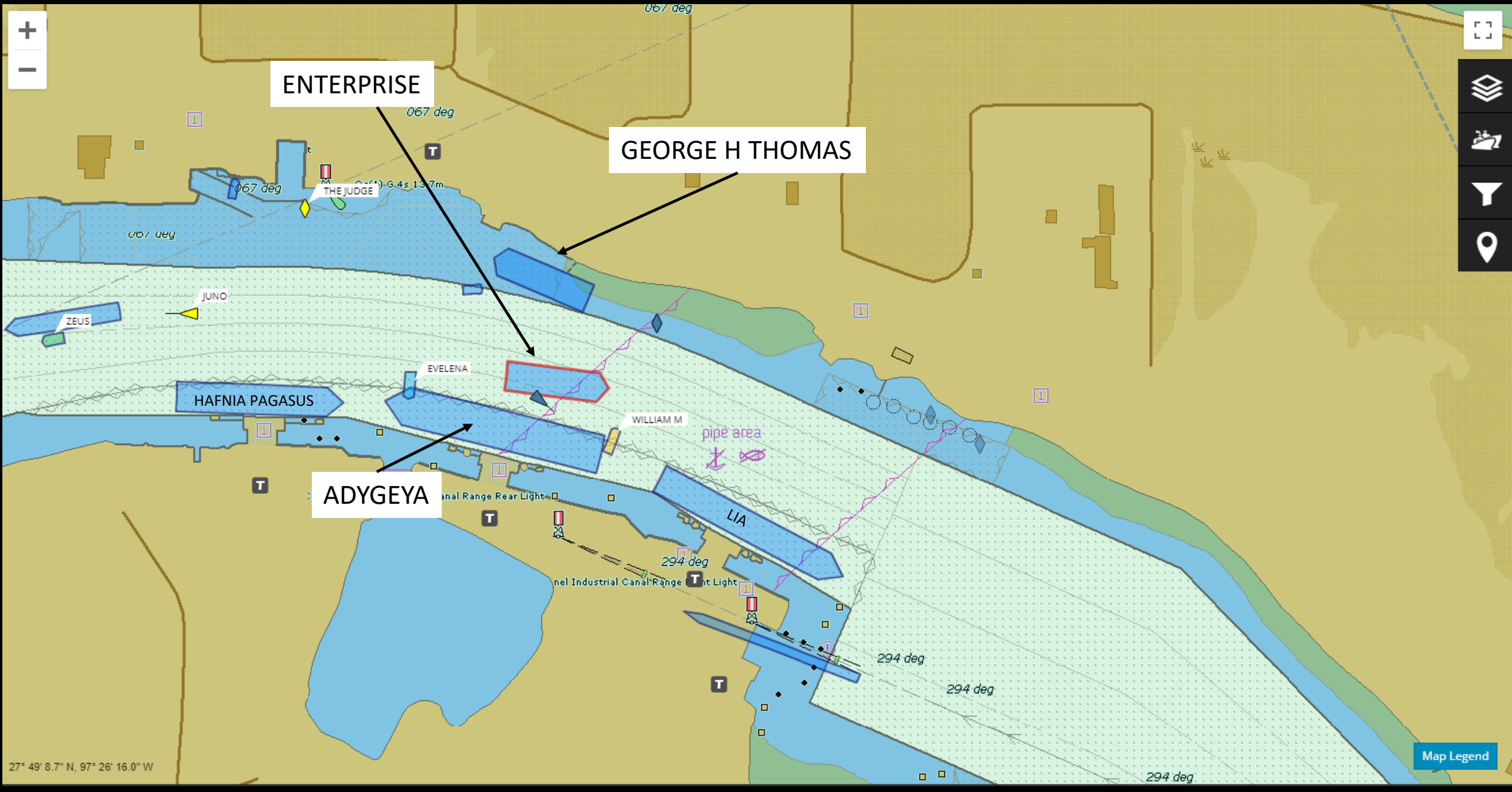
Map Legend



ENTERPRISE

GEORGE H THOMAS

ADYGEYA



27° 49' 8.7" N, 97° 26' 16.0" W

Map Legend



ENTERPRISE

GEORGE H THOMAS

ADYGEYA

HAFNIA PAGASUS

EVELENA

WILLIAM M

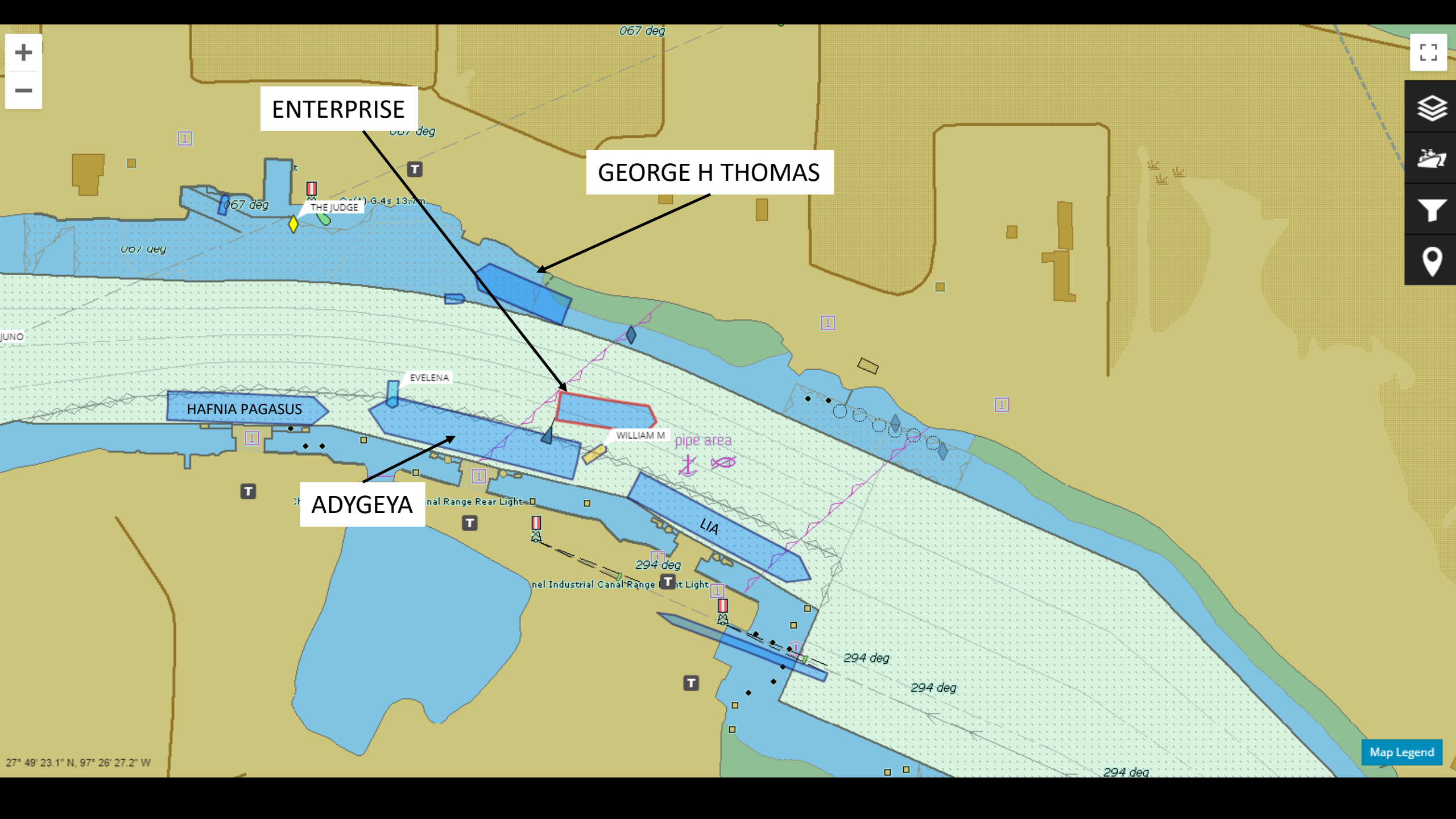
LIA

THE JUDGE

pipe area

27° 49' 23.1" N, 97° 26' 27.2" W

Map Legend

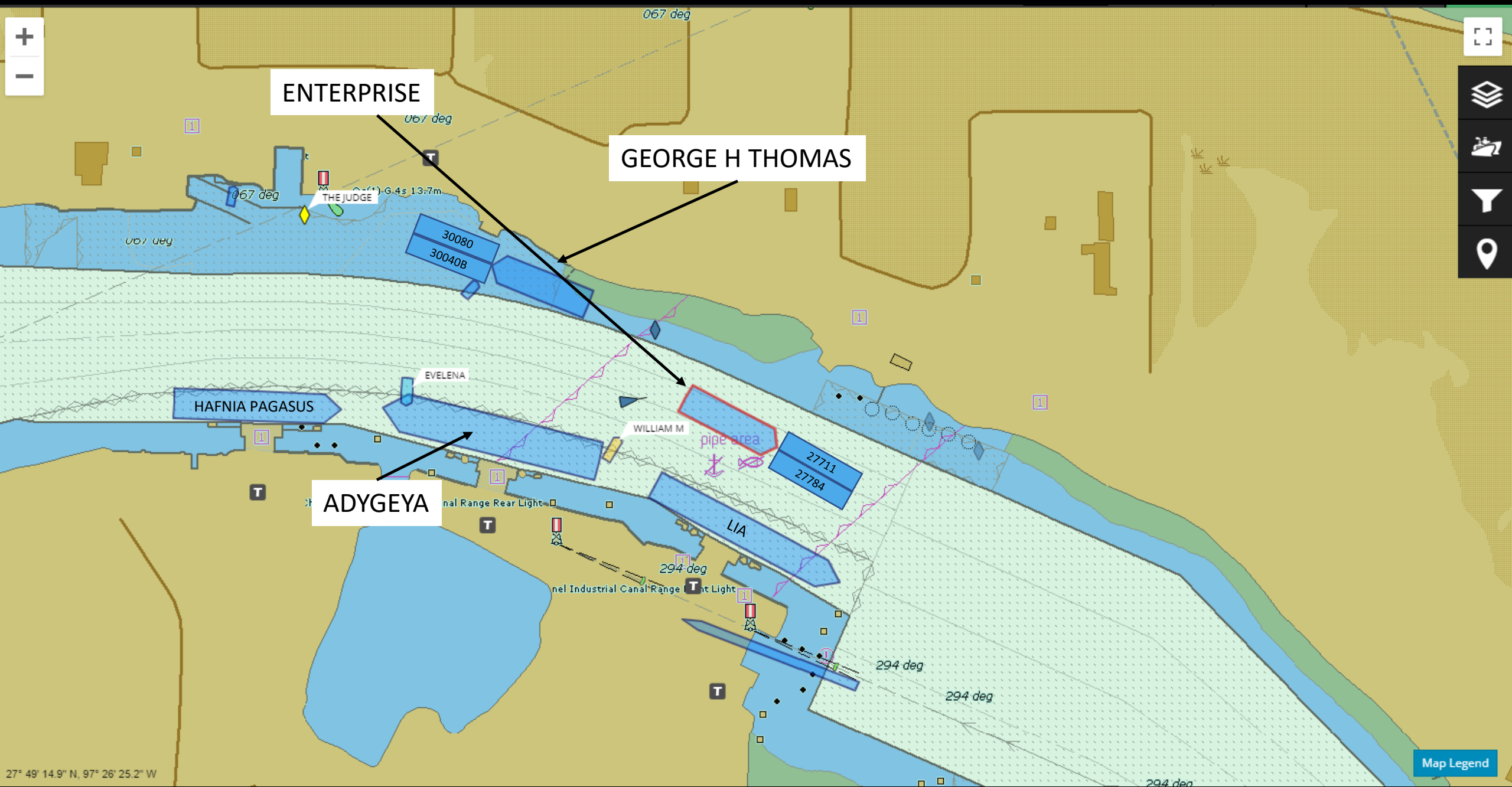




ENTERPRISE

GEORGE H THOMAS

ADYGEYA



27° 49' 14.9" N, 97° 26' 25.2" W

Map Legend

Recommendations

- **Identify Choke Points and develop procedures for passing within these areas**
- **Develop a process for communicating situational awareness for vessel movements**